

US FINISH SELECTION 2026

HOWE

THOUGHTFULLY
CURATED CHOICES



CHAIRS

40/4
Seats / backs
Natural wood
veneers

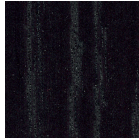


V3 - oak



V15 - walnut

40/4
Seats / backs
Stains



LW17 - black



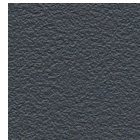
Any RAL

All RAL colours available
based upon customer sample

40/4
Seats / backs
Polyamide



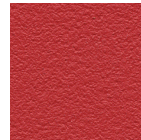
PA200 - black



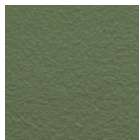
PA100 - Howe grey



PA300 - coconut



PA110 - Ayers Rock red



PA360 - olive green



PA320 - mandarin



PA250 - blue eyes

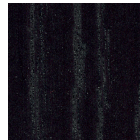


PA260 - marine blue

40/4
**WOOD
FRAME**
Seats / backs
Natural wood
veneers / stains



V3 - oak

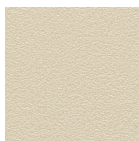


LW17 - black stain

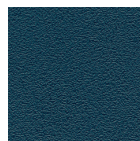


LW25 - walnut stain

SixE
Shells
Polypropolyne



PP310 - wheat
VIRGIN



PP270 - ocean
VIRGIN



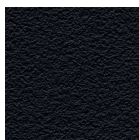
PP120 - red ochre
50% RECYCLED



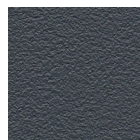
PP340 - fawn
VIRGIN



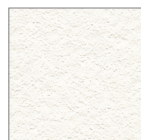
PP350 - lichen
VIRGIN



PP200 - black
VIRGIN OR
100% RECYCLED

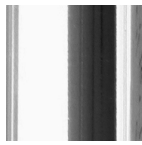


PP100 - Howe grey
100% RECYCLED



PP300 - chalk
VIRGIN OR
50% RECYCLED

40/4
SIXE
Frames
Steel



B1 - chrome



B6 - satin black



B7 - black



B9 - alu grey



B10 - Howe grey



B30 - white



B31 - satin white



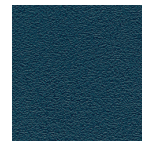
Any RAL

All RAL colours
available based
upon customer
sample

SIXE
ONLY



Wheat



Ocean



Red Ochre



Fawn



Lichen

SIXE SWIVEL
SIXE LEARN

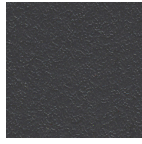
Base
Polyamide



PA100 - Howe grey

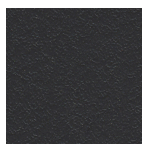
SIXE SWIVEL
SIXE LEARN*

Swing arm*
Gas lift



B10 - Howe grey

AS100
Bases / seat
frames



B6 - satin black



B7 - black



B51 - polished alu



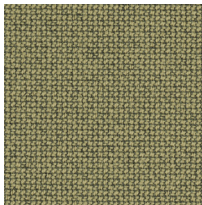
FABRICS

Enhance your designs with consciously chosen fabrics of top-notch performance and sustainable profiles.

If you're seeking a solution that goes beyond standard options, please contact HOWE Customer Service.



40/4
MN1
SixE
AS100



62126

CURA by Gabriel

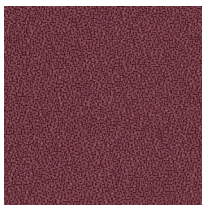
EMEA + US/CAN price group 1

Composition: 98% post-consumer recycled polyester, 2% polyester
 Martindale: 100,000
 Washable: 60-74°C
 Cleanable: YES

Flammability CAL 117: YES
 Added flame retardant: NO
 Flammability M: NO
 Crib 5: NO
 Ecolabel: YES
 Oeko-Tex: YES

[VIEW FULL COLOR RANGE](#)

40/4
MN1
SixE
AS100



64030

EVENT by Gabriel

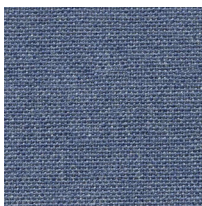
EMEA + US/CAN price group 1

Composition: 100% polyester
 Martindale: 100,000
 Washable: 60°C
 Cleanable: YES

Flammability CAL 117: YES
 Added flame retardant: NO
 Flammability M: NO
 Crib 5: NO
 Ecolabel: YES
 Oeko-Tex: YES

[VIEW FULL COLOR RANGE](#)

40/4
MN1
SixE
AS100



Wedgwood - IF027

MAIN LINE PLUS by Camira

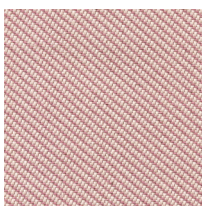
EMEA + US/CAN price group 1

Composition: 67% wool, 20% flame retardant viscose, 13% viscose
 Martindale: ≥50,000
 Washable: YES
 Cleanable: YES

Flammability CAL 117: YES
 Added flame retardant: YES
 Flammability M: NO
 Crib 5: YES
 Ecolabel: NO
 Oeko-Tex: YES

[VIEW FULL COLOR RANGE](#)

40/4
MN1
SixE



Seafarer - OOC16

OCEANIC by Camira

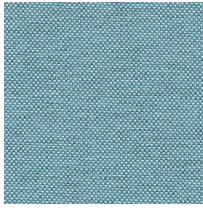
EMEA + US/CAN price group 1

Composition: 100% post-consumer recycled polyester
 Martindale: ≥100,000
 Washable: 60°C
 Cleanable: YES

Flammability CAL 117: YES
 Added flame retardant: NO
 Flammability M: NO
 Crib 5: NO
 Ecolabel: YES
 Oeko-Tex: YES

[VIEW FULL COLOR RANGE](#)

40/4
MN1
SixE



Tide - QUE12

QUEST by Camira

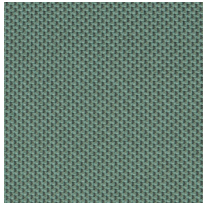
EMEA + US/CAN price group 1

Composition: 100% post-consumer recycled polyester
Martindale: ≥100,000
Washable: 60°C
Cleanable: YES

Flammability CAL 117: YES
Added flame retardant: NO
Flammability M: NO
Crib 5: NO
Ecolabel: YES
Oeko-Tex: YES

[VIEW FULL COLOR RANGE](#)

40/4
MN1
SixE
AS100



Joy - REP07

REPLAY by Camira

EMEA + US/CAN price group 1

Composition: 100% post-consumer recycled flame retardant polyester
Martindale: ≥100,000
Washable: 60°C
Cleanable: YES

Flammability CAL 117: NO
Added flame retardant: YES
Flammability M: M1
Crib 5: NO
Ecolabel: YES
Oeko-Tex: YES

[VIEW FULL COLOR RANGE](#)

40/4
MN1
SixE



Resin - EGL04

RIVET by Camira

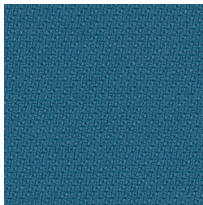
EMEA + US/CAN price group 1

Composition: 100% post-consumer recycled polyester
Martindale: ≥80,000
Washable: 60°C
Cleanable: YES

Flammability CAL 117: YES
Added flame retardant: NO
Flammability M: NO
Crib 5: NO
Ecolabel: YES
Oeko-Tex: NO

[VIEW FULL COLOR RANGE](#)

40/4
MN1
SixE



2440-66763

STEP by Gabriel

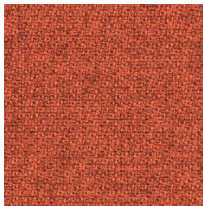
EMEA + US/CAN price group 1

Composition: 100% Trevira CS
Martindale: 100.000
Washable: 60-74°C
Cleanable: YES

Flammability CAL 117: YES
Added flame retardant: YES
Flammability M: M1
Crib 5: YES
Ecolabel: YES
Oeko-Tex: YES

[VIEW FULL COLOR RANGE](#)

40/4
MN1
SixE
AS100



2543-63138

STEP MELANGE by Gabriel

EMEA + US/CAN price group 1

Composition: 100% Trevira CS
Martindale: 100.000
Washable: 60-74°C
Cleanable: YES

Flammability CAL 117: YES
Added flame retardant: YES
Flammability M: M1
Crib 5: YES
Ecolabel: YES
Oeko-Tex: YES

[VIEW FULL COLOR RANGE](#)

40/4
MN1
SixE
AS100



Atacama - TAN-0004

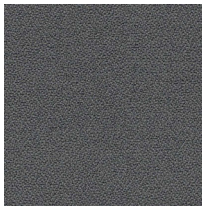
TANNERY by Spradling

EMEA + US/CAN price group 1

Composition: Vinyl topcoat, cotton backing
Martindale: >100.000
Washable: NO
Cleanable: YES

Flammability CAL 117: YES
Added flame retardant: YES
Flammability M: M2
Crib 5: NO
Ecolabel: NO
Oeko-Tex: NO

[VIEW FULL COLOR RANGE](#)

40/4
MNI
SixE

Blizzard - YS081

XTREME by Camira

EMEA + US/CAN price group 1

Composition: 100% post-consumer
recycled flame
retardant polyester

Martindale: ≥100,000

Washable: 60°C

Cleanable: YES

Flammability CAL 117: YES

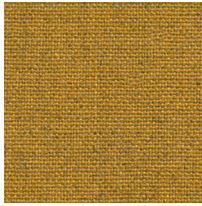
Added flame retardant: YES

Flammability M: NO

Crib 5: YES

Ecolabel: YES

Oeko-Tex: YES

[VIEW FULL COLOR RANGE](#)
40/4
MNI
SixE
AS100

Tooting - MLF7

MAIN LINE FLAX by Camira

EMEA + US/CAN price group 2

Composition: 70% virgin wool, 30% flax

Martindale: ≥50,000

Washable: NO

Cleanable: YES

Flammability CAL 117: YES

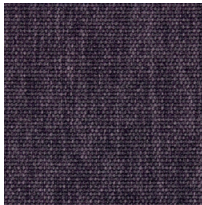
Added flame retardant: NO

Flammability M: NO

Crib 5: YES

Ecolabel: YES

Oeko-Tex: NO

[VIEW FULL COLOR RANGE](#)
40/4
MNI
SixE

Warrior - 466553-045

METAPHOR by Maharam

EMEA + US/CAN price group 2

Composition: 100% polyester

Martindale: 100,000 double rubs

Wyzenbeek

Washable: NO

Cleanable: YES

Flammability CAL 117: YES

Added flame retardant: NO

Flammability M: NO

Crib 5: NO

Ecolabel: NO

Oeko-Tex: NO

[VIEW FULL COLOR RANGE](#)
40/4
MNI

Skylight

VALENCIA B1 by Spradling

EMEA + US/CAN price group 2

Composition: Vinyl topcoat,
cotton backing

Martindale: >300.000

Washable: NO

Cleanable: YES

Flammability CAL 117: YES

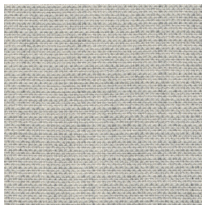
Added flame retardant: YES

Flammability M: M1

Crib 5: YES

Ecolabel: NO

Oeko-Tex: NO

[VIEW FULL COLOR RANGE](#)
40/4
MNI
SixE
AS100

2424-4031

CRISP by Gabriel

EMEA + US/CAN price group 3

Composition: 93% wool, 7% polyamide

Martindale: 200 000

Washable: NO

Cleanable: YES

Flammability CAL 117: YES

Added flame retardant: NO

Flammability M: M1

Crib 5: NO

Ecolabel: YES

Oeko-Tex: YES

[VIEW FULL COLOR RANGE](#)
40/4
MNI
SixE
AS100

2409-64119

FAME by Gabriel

EMEA + US/CAN price group 3

Composition: 95% wool, 5% polyamide

Martindale: 200 000

Washable: NO

Cleanable: Only dry

Flammability CAL 117: YES

Added flame retardant: NO

Flammability M: NO

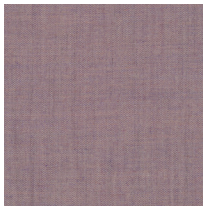
Crib 5: YES

Ecolabel: YES

Oeko-Tex: YES

[VIEW FULL COLOR RANGE](#)

40/4
MNI
SixE
AS100



0682

REMIX 3 by Kvadrat

EMEA + US/CAN price group 3

Composition: 90% new wool, 10% nylon
Martindale: 100,000
Washable: NO
Cleanable: Only dry

Flammability CAL 117: YES
Added flame retardant: NO
Flammability M: NO
Crib 5: NO
Ecolabel: YES
Oeko-Tex: NO

[VIEW FULL COLOR RANGE](#)

40/4
MNI
AS100



0926

CANVAS 2 by Kvadrat

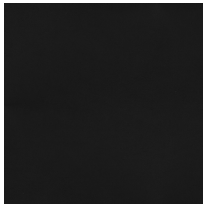
EMEA + US/CAN price group 4

Composition: 90% new wool, 10% nylon
Martindale: 100,000
Washable: NO
Cleanable: Only dry

Flammability CAL 117: YES
Added flame retardant: NO
Flammability M: NO
Crib 5: NO
Ecolabel: YES
Oeko-Tex: NO

[VIEW FULL COLOR RANGE](#)

40/4
MNI
AS100



Black - 41599

ULTRA by Sørensen Leather

EMEA + US/CAN price group 4

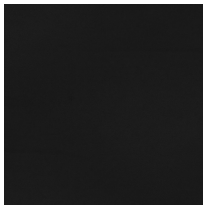
(TANGO), BLACK

Composition: Protected
Martindale: -
Washable: -
Cleanable: -

Flammability CAL 117: YES
Added flame retardant: NO
Flammability M: -
Crib 5: -
Ecolabel: -
Oeko-Tex: -

[BLACK ONLY](#)

AS100



Black - 42438

BASIC by Sørensen Leather

EMEA + US/CAN price group 5

(KNIGHT), BLACK

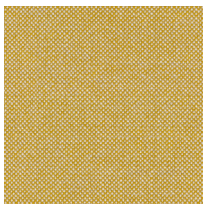
Composition: Protected
Martindale: -
Washable: -
Cleanable: -

Flammability CAL 117: YES
Added flame retardant: NO
Flammability M: -
Crib 5: -
Ecolabel: -
Oeko-Tex: YES

[BLACK ONLY](#)

40/4
MNI
Needs
testing

40/4
MNI
SixE
AS100



0407

HALLINGDAL 65 by Kvadrat

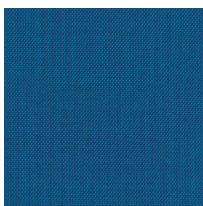
EMEA + US/CAN price group 5

Composition: 70% new wool,
30% viscose
Martindale: 100.000
Washable: NO
Cleanable: Only dry

Flammability CAL 117: YES
Added flame retardant: NO
Flammability M: NO
Crib 5: YES
Ecolabel: YES
Oeko-Tex: NO

[VIEW FULL COLOR RANGE](#)

40/4
MNI
SixE
AS100



0865

STEELCUT TRIO 3 by Kvadrat

EMEA + US/CAN price group 5

Composition: 90% new wool, 10% nylon
Martindale: 100.000
Washable: NO
Cleanable: Only dry

Flammability CAL 117: YES
Added flame retardant: NO
Flammability M: NO
Crib 5: NO
Ecolabel: YES
Oeko-Tex: NO

[VIEW FULL COLOR RANGE](#)

40/4
MNI
AS100



Burgundy - 30317

SAVANNE by Sørensen Leather

EMEA + US/CAN price group LSL

Composition: Semi-aniline
Martindale: -
Washable: -
Cleanable: -

Flammability CAL 117: -
Added flame retardant: -
Flammability M: -
Crib 5: -
Ecolabel: -
Oeko-Tex: YES

[VIEW FULL COLOR RANGE](#)

40/4
MNI
AS100



Altweiss - 41576

ULTRA by Sørensen Leather

EMEA + US/CAN price group LUCL

(TANGO), COLOURED

Composition: Protected
Martindale: -
Washable: -
Cleanable: -

Flammability CAL 117: -
Added flame retardant: -
Flammability M: -
Crib 5: -
Ecolabel: -
Oeko-Tex: -

[VIEW FULL COLOR RANGE](#)





AS TABLES
MOVEO
SIMPLA
TEMPEST

Tops
Natural wood
veneers / stains



VU1 - maple



VU3 - oak

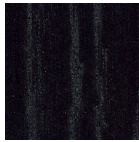


VU5 - cherry

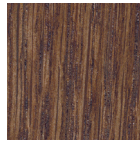


VU15 - walnut

AS tables standard:
VU1 maple, VU3 oak ONLY



LW17 - black stain



LW25 - walnut stain



LW30 - white stain



Any RAL

All RAL colors available
based upon customer sample

FOLDING SURFACES

Tops
Natural wood
veneer



V3 - oak

AS TABLES
MOVEO
SIMPLA
TEMPEST

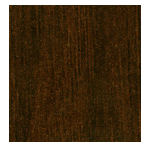
Tops
Wood grain
laminates



LU31 - maple



LU35 - cherry



LU45 - walnut

AS tables standard:
LU31 maple ONLY

AS TABLES
FOLDING SURFACES
MOVEO
SIMPLA
TEMPEST

Tops
Coloured
laminates



LU300 - white



LU400 - grey



LU200 - black



Any FORMICA /
WILSONART
colored laminates

Folding Surfaces standard:
LU300 white, LU200 black ONLY

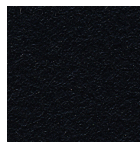
*Any FORMICA / WILSONART
colored laminates does not apply
to Folding Surfaces

TUTOR

Tops
Bendable
compact
laminates



F300 - white



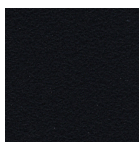
F200 - black



Any bendable
compact laminate

AS TABLES

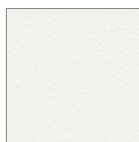
Tops
Linoleum



FL200 - black

FOLDING SURFACES

Tops
Melamine



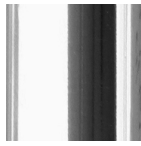
M310 - white



TABLES

SIMPLA
TEMPEST
TUTOR

Bases
Steel



B1 - chrome



B6 - satin black



B7 - black



B9 - alu grey



B10 - Howe grey



B30 - white



B31 - satin white

MOVEO

Bases
Aluminum



B6 - satin black



B51 - polished alu
- feet only



B52 - anodized alu
- columns only

AS TABLES

Bases



B6 - satin black



B7 - black



B31 satin white
- columns only



B51 - polished alu
- bases only

FOLDING SURFACES

Bases



B6 - satin black





COLOUR REFERENCE ONLY
Variations in colours and structures may occur
Subject to ongoing changes and adjustments